

# THE VOICE OF

# St. Matthew

UNITED CHURCH OF CHRIST

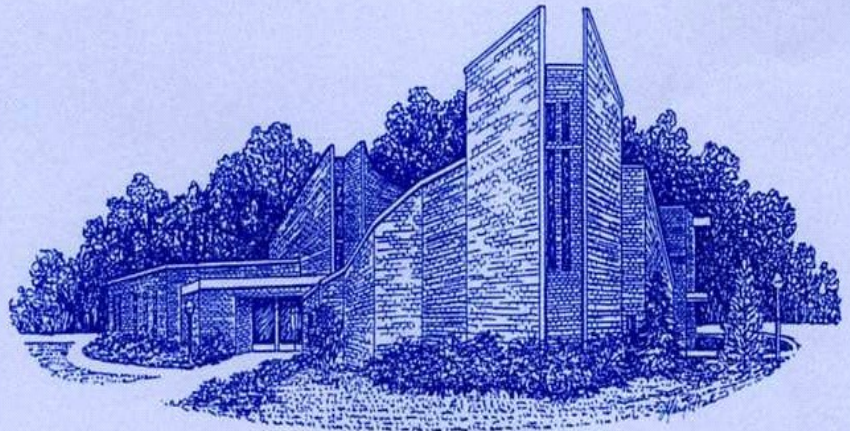
1420 SOUTH GABLES BLVD.

WHEATON, ILLINOIS 60189

630-665-1236

Fax 630-665-1436

[www.stmatthew-ucc.org](http://www.stmatthew-ucc.org)



**February 2016**

## **The Offering**

As many of you know, I recently returned from a prayer and meditation retreat in Bali, Indonesia. You may wonder why anyone would find it necessary to travel twenty-two hours to a strange part of the world so different from our own, simply for prayer and meditation. For years I had the same reaction when my friends Bruce and Ruth asked me to join them on a retreat they lead. I am firmly Christian. I know nothing about Hinduism. I can pray in any number of monasteries in this country if I want a meditation experience. Why go?

Their response to me was always the same: "There is something unique about open-hearted Balinese people and their approach to God." It did not take me long to discover this on my trip. A passenger I met briefly on the airplane responded to my questions about taxi cabs and approximate cost by telling me that he would include me in his cab ride and take me to my hotel. That was just the start. Never have I experienced a more beautiful people who consistently greeted me with full relaxed smiles and open hearts. They were present to me as human beings, even when they desperately needed me to buy their wares in the market. I sense they saw something sacred in me and in each person or creature they encounter. In the maddening traffic and dangerous passing that more than once had me close my eyes, I never once heard an expression of anger or frustration. I wonder what shapes such dispositions of receptivity in a people?

Much of what creates this disposition of receptivity and honoring others is the way they pray. In the Western world, with our consumer mentality, we approach prayer as asking for something from God. In Bali, prayer is about an offering. One ancient prayer taught to children as they sit in their mother's laps goes: "I remember my emptiness. I offer the flowers of my heart to the one God. I offer the flowers of my heart to the many manifestations of God. I offer the flowers of my heart to my ancestors with thanksgiving. I remember my emptiness." In making these and many other daily offerings of the self to God the Balinese make room, a big empty place to receive God's gifts. And, they make room to receive the people they greet in whom they are open to the presence of God. Their hearts are soft and receptive.

We tack on an offering at the end of our worship, mindless, assuming that it's a pause in worship to take the money to pay church bills. What if we understood the offering as the essence of worship? What if we began our worship either at church or in personal devotion with an offering of ourselves to God?

So begin your worship by remembering your emptiness and offer the flowers of your heart to God. Cultivate a receptivity to the divine in your lives and in one another. Then you will discover that each person we meet and life itself is all a gift ready to be received.

*Christ's peace,  
Pastor Allen*

## Food on the First

Thanks to all who donated last year. The People's Resource Center and their clients were very grateful of your generosity.

Here is what is needed for February:

- Canned tuna
- Canned chicken
- Canned fruit
- Canned vegetables
- Soup
- Cereal (no corn flakes)
- Toothpaste
- Toothbrushes
- Soap
- Baby wipes



As always, please make sure items are not opened or expired.

If you have any questions, please call Betty Greer at 630.682.4084.

Blessings to all.

### **Ash Wednesday**

*Please be sure to join us on Wednesday, February 10th at 7pm for a service to begin the Lenten Season. This service will offer moving readings for reflection, the Imposition of Ashes and Communion. Plan to participate on this first day of Lent, in preparation for the resurrection of Jesus Christ on Easter Sunday.*



### **FEBRUARY BIRTHDAYS**

- |    |                        |
|----|------------------------|
| 1  | Kevin Cole             |
| 2  | Taylor Holland         |
|    | Tim Schubert           |
| 4  | Charles Hambrick-Stowe |
|    | Lee Staton             |
| 5  | Pam Vargo              |
| 6  | Bruce Anderson         |
|    | Linnea Karpenske       |
| 10 | Elizabeth Baird        |
|    | Marilyn Giese          |
|    | Kirk Stubbee           |
| 11 | Charlene Cooper        |
| 12 | Stuart Blake           |
| 14 | Daniel McGrath         |
|    | Amber Quinn            |
| 16 | Courtney Christensen   |
|    | Lee Craig              |
| 19 | Abby Johnson           |
| 22 | Carl Anderson          |
|    | Tom Macauley           |
| 24 | Liliana King           |
| 25 | Joyce Boyd             |
|    | Anthony Kresl          |
| 26 | Tracey Blake           |
|    | Cathy Miller           |
|    | Carol Mittman          |

### **Pennies From Heaven**

Participation in the Manna program is still languishing. I am encouraging all of you to become a "Fanna Manna". If we could double our participation, we could double our profits. Remember - retailers are willing to make donations to us, so this is a fundraiser that costs us nothing!

Incredible!



**Thinking of Valentine's Day? If you order your Manna cards by February 7th, they can be picked up in the office Wednesday afternoon (2/10), through Sunday, February 14th.**

**Think candy, flowers, a unique gift, travel, dinner at a nice restaurant, or a romantic movie!**

**Check out the Manna table in Dobstaff Hall on Sunday.**



## *Notes from the Music Room.....*

The Music Ministry here at St Matthew has started the year with a few challenges. As noted in the Annual Report, our organ deteriorated further last fall. In order to keep it working as well as possible, things had to be moved around causing some sounds that are less than ideal. Balancing sound and volume are now limited as well. Replacement parts are not available or extremely rare. If and when parts continue to fail, the organ's shortcomings will become more noticeable. Therefore, a committee is being formed to investigate replacement options. Please see me if you have any questions at this time. I look forward to your input.

Singers; while I am very proud of our core group of vocalists, our small number of voices is limiting the music that can be shared on Sunday morning. There are wonderful anthems in our library that we are unable to sing because of the shortage of voices. New music that is meaningful, thoughtful, or scripture-based is hard to come by for smaller groups. One reason for the shortage of singers may be due to the commitment. Yes, we meet every Wednesday at 7:30pm, and we sing three Sundays a month. However, as you may have noticed, not everyone is present every week. This is due to several reasons, such as work-related conflicts, travel, illness, family gatherings, etc. Believe it or not, this also happens at rehearsals, which is one reason we don't just rehearse the next Sunday's anthem. We work many weeks ahead so everyone has several opportunities to rehearse and feel comfortable with the music.

In recognizing that time conflicts may be limiting participation, an idea was put forth to try a Sunday where we will have a rehearsal starting at 8:30am in which anyone who likes to sing can come, rehearse, and present the anthem that morning. Please watch the Sunday bulletins and the Happenings for dates and more details as they become available. We look forward to seeing as many of you as possible. Of course, you are always welcome on Wednesday evenings too for song and fellowship.

Peace to All,

Jamie  
630-202-6788  
lanni1@comcast.net



Thank you to all our  
volunteers who served  
Marian Park residents at  
Thanksgiving. You are a  
blessing to our church  
and community!

## Children's Ministry

### February 2016

The topic of our workshop rotation through February 7th is ***Sinners, Outcasts and the Spirit***, or S.O.S. for short. This unit focuses on how Jesus reached out to outcasts and sinners and how He gave them the same love he gave to others. We will be using the buzz phrase WWJD (What Would Jesus Do?) quite a bit during these weeks. In the Preschool Pals class the children are learning parables that also speak of sinners, outcasts and the spirit. Through art, science, drama, music and Bible knowledge the children will learn how Jesus is truly God's love.



We are collecting items for our ***College Student and Military Care Package Project***. Donated items for the care packages and \$10 donations for postage (\$10 per box sent) are appreciated. The poster in the narthex gives some ideas of items needed. We feel strongly that we need to maintain relationships with those members of St. Matthew who are away from home. Donations can be made until February 28th and placed in the narthex. The children and their parents will pack boxes on February 28th following worship. **If you have a college student or military family member, please email their name, school, branch, and address to [swold45@hotmail.com](mailto:swold45@hotmail.com).**

**Valentine Party, Sunday February 14th during Sunday School.** The children will have fun playing Valentine Bingo, eating Valentine treats, making a craft and watching "The Veggie Tale Love" movie.



**DuPage Convalescent Center Sunday School mission project, February 21st:** Instead of having Sunday School at St. Matthew, Sunday School children and their families will meet at 9:30am at the DuPage Convalescent Center at 400 N. County Farm Road, Wheaton. Children and their families will interact with the residents and assist in pushing the residents, in their wheelchairs, to the Sunday morning worship service. More information will follow in a Sunday School family email.



**Lent, February 28th-April 3rd.** The Sunday School children will go on a five-week Road Trip in Workshop Rotation. Each Sunday, the children take a different trip to the Holy Land with tour guides from the Jerusalem Tours Office. Art, media production, game, drama and video will all be part of the journey.

**January & February Birthdays: Otto Sturm 1/10, Mary Kate Muntz 1/18, Anna Muntz 1/24, Callista Roser 1/28, Logan Roser 2/14, Zelda Chapple 2/8, Andrew Spicer 2/16**



**Looking ahead:**

**Girl Scout Sunday, March 6th.** The St. Matthew Girl Scouts will participate in the workshop service. They will receive their participation patches and the pin for their "My Promise, My Faith" project that they will be working on after Sunday School on January 31st and February 7th. Following worship they will be honored in Dobstaff Hall where their projects will be on display and cake will be served.



**Easter Egg Hunt, March 19th at 10 am.** Egg hunt, donuts, pictures with the Easter Bunny, games and crafts.

**FILLED EGGS NEEDED:** We fill about 500 eggs but because of the large number of children attending we still run short. We are asking for volunteers to take home a bag of 20 eggs and fill them with a piece of candy, toy, stickers, etc. We will have the eggs available at the beginning of March.



*Saturday*  
*March 19th*  
*St. Matthew U.C.C.*  
**EASTER**

**EGG  
HUNT**

**10 A.M.**

Get your picture taken

**With the Easter Bunny!**

Enjoy donuts and crafts after the hunt

Please bring your own basket

**1420 S. Gables Blvd.**

Wheaton, IL 60189

630.665.1236

[www.stmatthewucc.org](http://www.stmatthewucc.org)

*St. Matthew member Mary Henderson wrote the below article, published on the mighty.com, to help bring comfort to parents of children with Skeletal Dysplasias. The article is sure to bring peace and hope to many. If you are interested in learning more about Pseudoachondroplasia, a rare Skeletal Dysplasia, visit [www.supportPSACH.com](http://www.supportPSACH.com) where you can read about research, fund-raising events and opportunities to donate.*

## **5 Things New Parents of Kids With Skeletal Dysplasias Need to Know**

My daughter was born healthy at 8 pounds and grew and developed as any typical child. We never had an inkling until she was 2 that there was anything different or amiss about her body.

We were sent into turmoil following an x-ray appointment after her 2-year well check-up. After visiting the genetics department at a big Chicago hospital, she was given a diagnosis of pseudoachondroplasia, a rare skeletal dysplasia. To say we were thrown off our rockers was an understatement. Our daughter, they explained, would be short in stature, have early and lifelong joint problems, bone deformities... the list seemed to go on forever. I scribbled notes on a pad, not understanding half of what I was writing. Not knowing the new life journey I was being sent on.

I held my daughter each night and sobbed while singing her songs. She wiped my tears and told me not to cry. The days went on and the world turned, even though I didn't feel like I was moving.

Little did I know that as life went on, as I would make friends, connections and partners in this life journey; things would get easier. Over time, I realized that yes, my daughter would face challenges that I knew nothing about, but as her mom, I would help her face them. I would do all I can to help her overcome differences and help the world around her understand differences. It was now my life calling to help educate, inform and be more understanding and tolerant. I felt a new importance to my life, something that wasn't there before.

I slowly began looking at the world and people differently, feeling their pain and understanding them in a new way. I also learned I hated the word "normal" when talking about "healthy" children. All kids are normal — including my own. She may have pseudoachondroplasia, but that doesn't define her. It's just a tiny part of her. She's one of the smartest, most compassionate and most aware 5-year-olds I know. She will learn to love and accept others in a way that others will never get the chance to learn. Our whole family will — our kids are being instilled with a lesson of love and compassion for the world around them.

I am blessed beyond belief and lucky that she calls me mom. I'm thankful for her each and every day, and know that things will be OK. And not just OK, they will be great.



*Continued on next page*

Here's what I think all new parents of children with skeletal dysplasias should know:

1. **Every accomplishment — down to the smallest thing like learning how to step up a curb without help — will mean the world to you.** You will feel a pride many other parents are not lucky enough to know. You will take nothing for granted, and celebrate every success of your child. Your highs might be higher and lows lower than others. Hold onto those highs and keep them close to your heart.
2. **You will find many along a similar journey and many to support you, but all our journeys are unique.** You will learn how *you* want to handle your own situations and how to teach your own child. I am not comfortable referring to my daughter as a “little person,” though so many with a form of dwarfism are OK with it. I choose not to label my daughter in any way, and I respect those who choose to use that term or others. You choose your journey and respect other journeys.
3. **Your child's diagnosis and this new journey you are on will make you a better person; this I promise you.** I could not even see far enough down my black tunnel a few years ago to understand this, but I am learning. I have a long way to go, but I do know that in a few quick years I am a stronger, more tolerant, understanding, compassionate, giving and kind person than I ever was. I have a hard time believing the “I was given this child for a reason” scenario, but sometimes I do have to wonder if there's some truth to it.
4. **You will become ultra sensitive to all discussions/comments regarding size, whether it's about being very tall or very short.** People say things — lots of things without even thinking twice — and you have to take it with a grain of salt. I'd spend my days sad and angry and hurt if I let everyone's comments (not even about my daughter) get to me. Yes, they do sometimes, especially if coming from people I care about, but I do my best to move on. Know that most people don't mean anything by it and you likely wouldn't have thought twice about commenting on size or growth if you weren't in this boat. Speak up when you choose to — pick your battles.
5. **Read and take comfort in the famous “Welcome to Holland” story by Emily Perl Kingsley.** I know it saved me in my darkest hour many times. It's something many people will never be privy to if they are not given a reason to read it. I cannot recall who exactly sent it to me, but I do know I've read it time and again, and it is very special and so true. It takes time to believe. You will have many moments where you wish you had the trip to Italy, but in time you will understand that Holland really is much better.



## Crazies Youth Ministry

### Upcoming Events

Red: Adult/Parent Meetings | Black: crazies Special Events

Green: crazies Regular Events | Blue: All-Church Events

# crazies

St. Matthew UCC

#### SOUPer Bowl of Caring & Lunch

NO crazies

crazies Fellowship and Study

Ash Wednesday Service

crazies Fellowship and Study

crazies Fellowship and Study

crazies Fellowship and Study

30 Hour Famine

NO crazies

Special Gathering with FCCGE

crazies Fellowship and Study

Maundy Thursday Meal & Worship

Easter Sunday Worship

NO crazies

Sunday, February 7<sup>th</sup>

Sunday, February 7<sup>th</sup>

Sunday, February 8<sup>th</sup>

Wednesday, February 10<sup>th</sup>

Sunday, February 14<sup>th</sup>

Sunday, February 21<sup>st</sup>

Sunday, February 28<sup>th</sup>

Fri., March 4<sup>th</sup> - Sat., March 5<sup>th</sup>

Sunday, March 6<sup>th</sup>

Sunday, March 13<sup>th</sup>

Sunday, March 20<sup>th</sup>

Thursday, March 24<sup>th</sup>

Sunday, March 27<sup>th</sup>

Sunday, March 27<sup>th</sup>

9am-Noon

OFF

6-8 pm

7pm

6-8 pm

6-8pm

6-8pm

TBD

OFF

6-8:30pm

6-8pm

6-8pm

9am & 11am

OFF

### WINTER RETREAT WAS SO FUN!

From Friday, January 15th-Saturday, January 17th our youth had a blast at the United Church of Christ's Pilgrim Park Camp. A big THANK YOU to everyone who was involved in making our weekend away possible!

### SOUPER BOWL SUNDAY is COMING SOON!

All youth (and the young at heart!) are invited to come to church in time for worship (9:30am) on Sunday, February 7th with a crock pot full of your favorite homemade SOUP.



After worship, we invite the whole congregation to join us for a soup lunch—bowls for eating at church will be available, as well as to-go containers priced at \$5 apiece. All proceeds made will go to the People's Resource Center Food Pantry. Last year we raised more than \$500! Let's see if we can do it again!





## Feed My Starving Children

**Thank you to all the St. Matthew volunteers who signed up to pack food on January 18th at Feed My Starving Children. The group of people we were a part of packed 23,760 meals in less than 2 hours, feeding 65 children for a year. Thank you again to everyone who took time out of their day to make a difference in the world!**



## **A Note from the Mothershed Family**

*To our church family, thank you all for your outpouring of love through cards, kind words, and meals during the loss of Allen's mom. We are so grateful. Also, thank you for being a church that generously gives time for their pastor to reflect and rest during his time at a silent retreat. Please keep him in your prayers.*

*Pastor Allen and Marla*



**Here are the Euchre Tournament Winners (Hi Baird and Edie DeBoard) with their trophy. A fun time was had by all!**

### **P.A.D.S.**

A big thank you to all of our dedicated PADS volunteers, with a special shout-out to Brian English for working one of the 11pm to 3am shifts at the very last minute! St. Matthew continues to step up with the needed food and manpower and your PADS Committee certainly appreciates all of the help. That being said, February has traditionally been a very hard month to staff and get the food slots filled because many of our regular volunteers are traveling. So the PADS Committee will be preparing the main entrée for our February 10th/11th commitment (\$ donations are greatly appreciated). Also, the sign-up board is already up in the narthex for February's other food and time requirements.

Thanks, St. Matthew!!



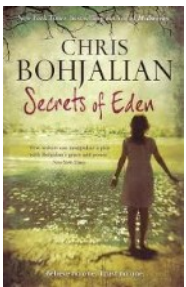
### **SIGN UP NOW FOR FAMILY CAMP!**

**Sign-ups are continuing for Family Camp, which will be Sunday, July 24th to Saturday, July 30th at Watson Homestead in the picturesque Finger Lakes region in western New York. Join us for a week of "Wine and Waterfalls" where possible group activities include hiking among the region's gorges and waterfalls, visiting some of the wineries and breweries in the area, and exploring the many museums in and around town--including the world-renowned Corning Glass Works. In addition, there are plenty of activities on-**



**site at Watson Homestead, including an indoor pool, archery range, hayrides, and a climbing wall. Sign-up forms are located in the narthex. Please see Mark Hutchison, Dianne Hutchison, Sam Kouns, John Kouns, or Hi Baird with any questions. We hope that you will be a part of our great St. Matthew tradition!**

**ADULT EDUCATION - IMMIGRATION** On Sunday, February 21 and 28th, parishioner Elizabeth McGuan, Attorney at Law, will be here to discuss immigration and how it affects all of us. Please join us after the service from 10:45-11:45am There is a sign up on the board. Child care will be provided. "Immigration is one of the most highly contested issues of our time, both in America, and around the world. It is also one of the most complicated; it is difficult to frame a thoughtful response from the information we receive in the news. Very often people inform their opinions from their political parties. But what does the Bible say about immigration? We'll begin our discussion with an overview of the current immigration law in America, which is unlike any that has existed in US history. Then, we'll examine teachings from the Old Testament (how many times are we called to protect the widow, the orphan, and the alien?) and New Testament. From there, we'll compare current immigration law in the US with the Christian message. And finally, we'll look at concrete ways we can welcome our immigrant neighbors."



**NOVEL APPROACHES** The novel to be approached in February is "Secrets of Eden" by Chris Bohjalian. From the bestselling author of "Midwives" comes this novel of shattered faith, intimate secrets, and the delicate nature of sacrifice. The date: Thursday, February 25th at 7:30pm (please note Thursday, not Friday this month). The place: The Boyd's, 510 S. Aurora Way in Wheaton. All are welcome! Please join us for lively discussion, od and fellowship. LOOKING AHEAD: "The Personal History of Rachel DuPree" by Ann Weisgarber.

**A "KEY" UPDATE** With transition in staff, changes in committee membership and use of the Church from outside groups, the Church council wants to ensure the safety and security of people and St. Matthew property. The council will be working on a new policy and procedure for distributing keys for anyone needing access to the building. To begin the process, an inventory is being done to update information on who currently possesses a key for the Church. If you have a key, please contact Kathy in the office at 630.665.1236 or of-  
fice@stmatthewucc.org by Monday, February 29 to let her know. Thank you in advance for your assistance in making sure St. Matthew continues to be a safe place for all.

## Lenten Scriptures

### *"The Path Less Taken"*

Anyone who has ever been lost in the woods knows that the best way out is to take the most well-worn path rather than faintly traveled ones. In this season of Lent, we explore the counterintuitive practice of taking the path less chosen as the way to salvation. We allow the Gospel stories of the passion narrative to guide us down that less-taken trail that Jesus chose, a path of death to life.



<b>February 14th</b>	Matthew 4:1-11
<b>February 21th</b>	Matthew 16:21
<b>February 28th</b>	John 15:9-17
<b>March 6th</b>	John 14:1-14
<b>March 15th</b>	I Corinthians 1:18-21
<b>March 22th</b>	Luke 19:28-40 / Passion Reading
<b>March 29th</b>	Matthew 28:1-10

*"True Temptations"*  
*"What Must Be"*  
*"Friendship with Jesus"*  
*"When I am Gone"*  
*"Was This Death Necessary?"*  
*"It Could Have Been Different"*  
*"Greater Than Our Fear"*

# February 2016

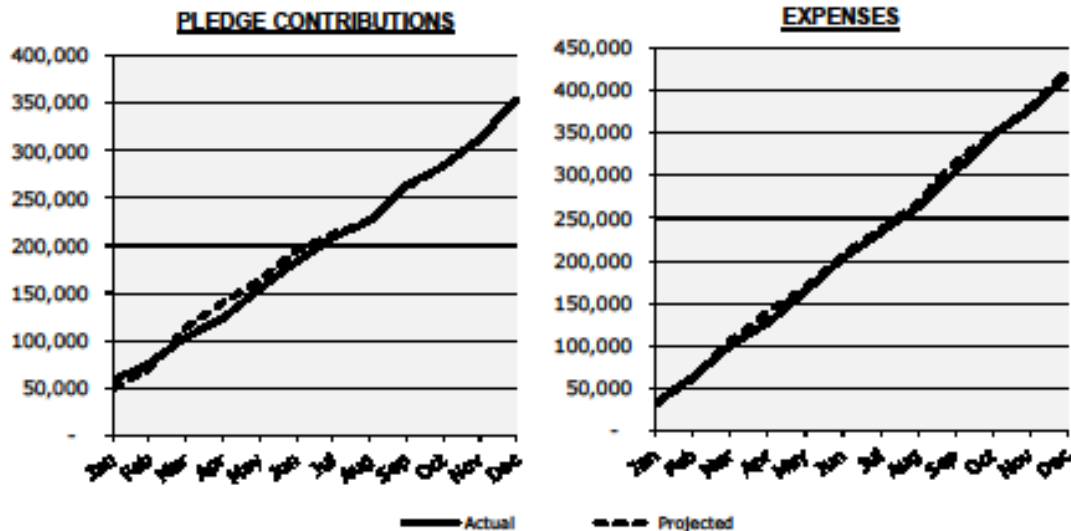
Sun	Mon	Tue	Wed	Thu	Fri	Sat
	1 7pm -Christian Education	2 6pm IntergeneRingers 7pm Membership\ 7:30pm Mission 7:30pm Chancel Ringers	3 1:30 - Women's Prayer Group 6:30pm -Praise Band 7:30pm Sanctuary Choir	4	5	6
7 9:30am -Worship Service <b>Souper Bowl of Caring &amp; Lunch</b> No crazies	8 7pm -Worship Committee	9 6pm IntergeneRingers 7:30pm Chancel Ringers	10 <b>Ash Wednesday</b> 1:30 - Women's Prayer Group 7pm - <b>Ash Wednesday Service</b>	11 7pm -Finance	12 5pm - Wedding Rehearsal	13 3:30 pm-Barnett- Dabb Wedding
14 9:30am -Worship Service 6pm-crazies	15 <b>President's Day - Church Office Closed</b>	16 6pm -IntergeneRingers 7:30pm Chancel Ringers	17 1:30 - Women's Prayer Group 6:30pm -Praise Band 7:30pm Sanctuary Choir	18 6pm- SRC 7pm -Council	19	20
21 9:30am -Worship Service 10:45am - Adult Education 6pm -crazies  <b>VOICE ARTICLES DUE</b>	22	23\ 6pm IntergeneRingers 7:30pm Chancel Ringers	24 1:30 - Women's Prayer Group 6:30pm Praise Band 7:30pm Sanctuary Choir	25	26	27
28 9:30am -Worship service 10:45am - Adult Education 6pm -crazies	29 7pm- Ministry Chairs meeting					

**ST. MATTHEW UCC GENERAL OPERATING FUND  
STATEMENT OF RECEIPTS AND EXPENDITURES**

For the Period Ended December 31, 2015

	ACTUAL CURRENT MONTH	ACTUAL YEAR-TO- DATE	ANNUAL BUDGET
<b>RECEIPTS:</b>			
Pledge Contributions	41,053	354,191	354,327
Loose Offerings	5,932	11,844	10,000
Rental Income	670	3,590	5,000
Fund Raising	561	4,880	8,000
Investment Income	54	116	-
More Property	29,500	46,000	46,000
More Property (special projects)	-	-	-
Miscellaneous Income	-	-	-
<b>TOTAL RECEIPTS</b>	<b>77,770</b>	<b>420,621</b>	<b>423,327</b>
<b>EXPENDITURES:</b>			
Ministry	22,692	227,289	229,129
Building	10,631	114,808	116,028
Mortgages & Notes	2,229	26,749	26,750
Mission / OCWM	512	29,000	29,000
Committees:			
Christian Education	1,328	8,925	10,270
Membership	10	1,664	2,750
Music	1,415	4,758	4,500
Worship	227	1,203	1,500
Endowment	-	-	-
Congregational Life	-	627	800
Memorial	-	-	100
Stewardship	-	501	500
Misc. & Contingency	-	1,122	2,000
<b>TOTAL EXPENDITURES</b>	<b>39,044</b>	<b>416,646</b>	<b>423,327</b>
<b>SURPLUS / (DEFICIT)</b>	<b>\$ 38,726</b>	<b>\$ 3,975</b>	<b>\$ -</b>

**2015 Activity - Actual vs. Projected**



Please contact John Adams if you have questions or need additional information.



**St. Matthew United Church of Christ**

630.665.1236 (Office)

630.665.1436 (Fax)

**Office Email:** [office@stmatthewucc.org](mailto:office@stmatthewucc.org)

**Web Site:** [www.stmatthewucc.org](http://www.stmatthewucc.org)

**Office Hours:**

Monday-Thursday: 9am-4pm

Friday: 9am-1pm

**Sunday Worship:** 9:30am

**Sunday Church School:** 10am

**Our Purpose:**

Become, Live, and Serve as Disciples of Jesus Christ.

**Our Identity:**

No matter who you are or where you are on life's journey, you are welcome and accepted here at St. Matthew United Church of Christ.

**Our Staff**

**Rev. Milton Allen Mothershed, Senior Pastor**

[allen.mothershed@stmatthewucc.org](mailto:allen.mothershed@stmatthewucc.org)

**Susan Wold, Director of Children's Ministry**

[susan.wold@stmatthewucc.org](mailto:susan.wold@stmatthewucc.org)

**Emily Davis, Director of Youth Ministry**

[emily.davis@stmatthewucc.org](mailto:emily.davis@stmatthewucc.org)

**Jamie Craig, Director of Music/Choir Director**

[jamie.craig@stmatthewucc.org](mailto:jamie.craig@stmatthewucc.org)

**Brian Dobbelaere, Organist/Pianist**

[brian.dobbelaere@stmatthewucc.org](mailto:brian.dobbelaere@stmatthewucc.org)

**Kim Congdon, Handbell Director**

[kim.congdon@stmatthewucc.org](mailto:kim.congdon@stmatthewucc.org)

**Joan Johnson, Business Manager**

[joan.johnson@stmatthewucc.org](mailto:joan.johnson@stmatthewucc.org)

**Kathy Robson, Administrative Assistant**

[office@stmatthewucc.org](mailto:office@stmatthewucc.org)